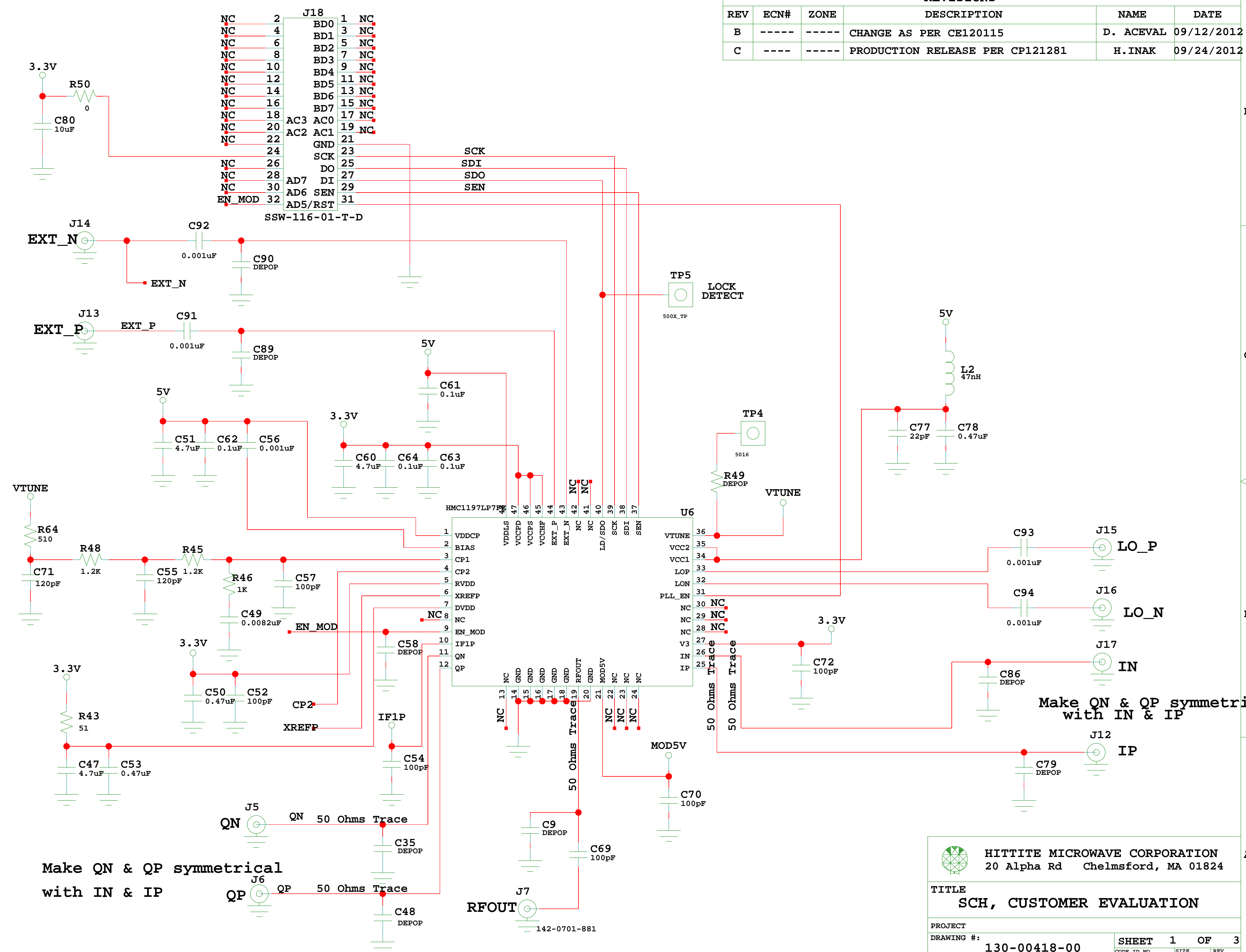



NOTICE OF PROPRIETARY PROPERTY: THIS DOCUMENT AND THE INFORMATION CONTAINED IN IT ARE THE PROPRIETARY PROPERTY OF HITTITE MICROWAVE CORPORATION. IT MAY NOT BE COPIED OR USED IN ANY MANNER NOR MAY ANY OF THE INFORMATION IN OR UPON IT BE USED FOR ANY PURPOSE WITHOUT THE EXPRESSED WRITTEN CONSENT OF AN AUTHORIZED AGENT OF HITTITE MICROWAVE CORPORATION.

REVISIONS					
REV	ECN#	ZONE	DESCRIPTION	NAME	DATE
B	----	----	CHANGE AS PER CE120115	D. ACEVAL	09/12/2012
C	----	----	PRODUCTION RELEASE PER CP121281	H. INAK	09/24/2012



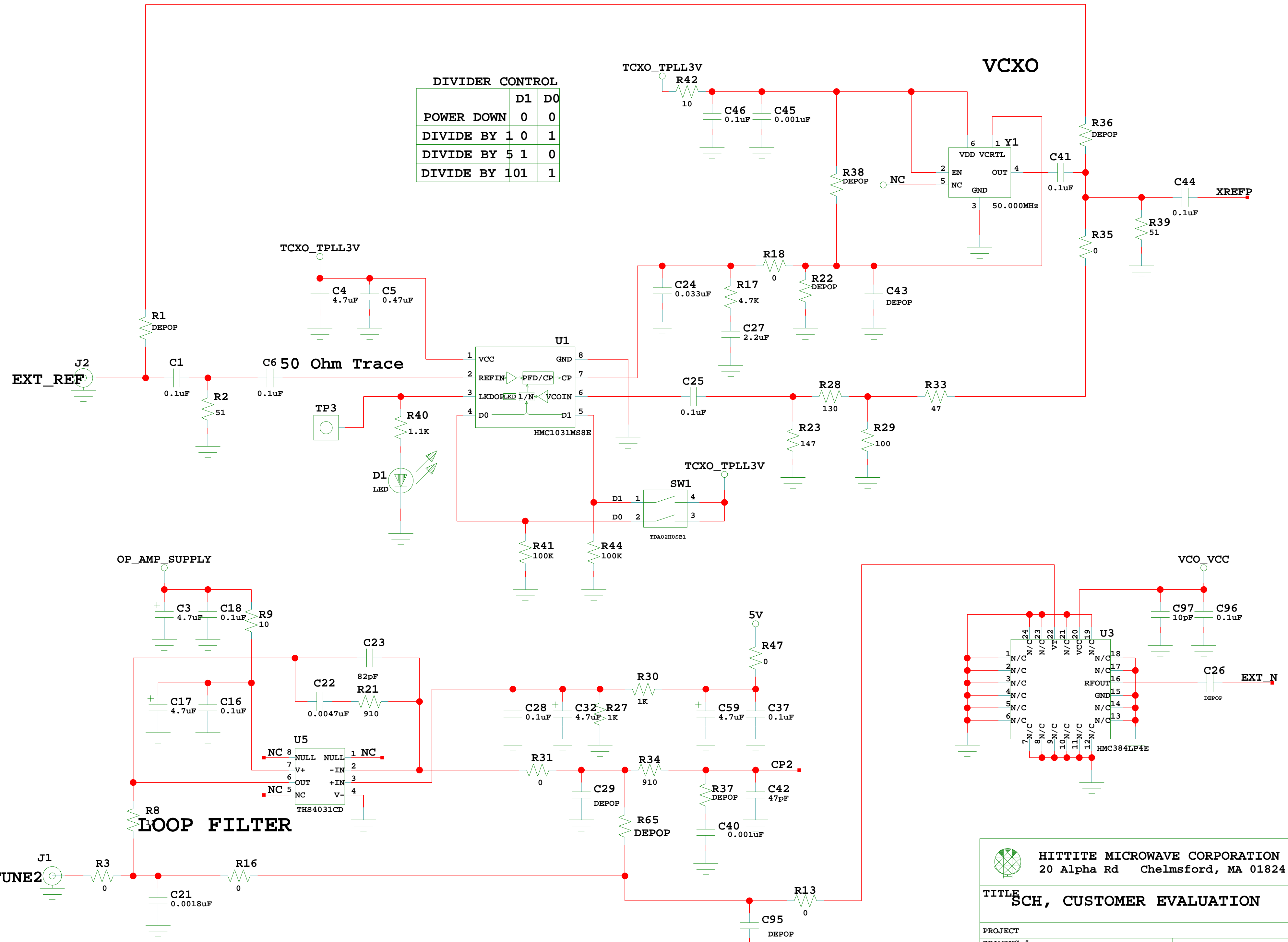
Make QN & QP symmetrical with IN & IP

Make QN & QP symmetrical with IN & IP

 <b>HITTITE MICROWAVE CORPORATION</b> 20 Alpha Rd Chelmsford, MA 01824			
<b>TITLE</b> SCH, CUSTOMER EVALUATION			
PROJECT		SHEET 1 OF 3	
DRAWING #: 130-00418-00		CODE ID NO.	SIZE
DRAWN BY: IMER SERBEST		DATE: 01/01/2010	REV: C

DIVIDER CONTROL

	D1	D0
POWER DOWN	0	0
DIVIDE BY 1	0	1
DIVIDE BY 5	1	0
DIVIDE BY 10	1	1



**HITTITE MICROWAVE CORPORATION**  
 20 Alpha Rd Chelmsford, MA 01824

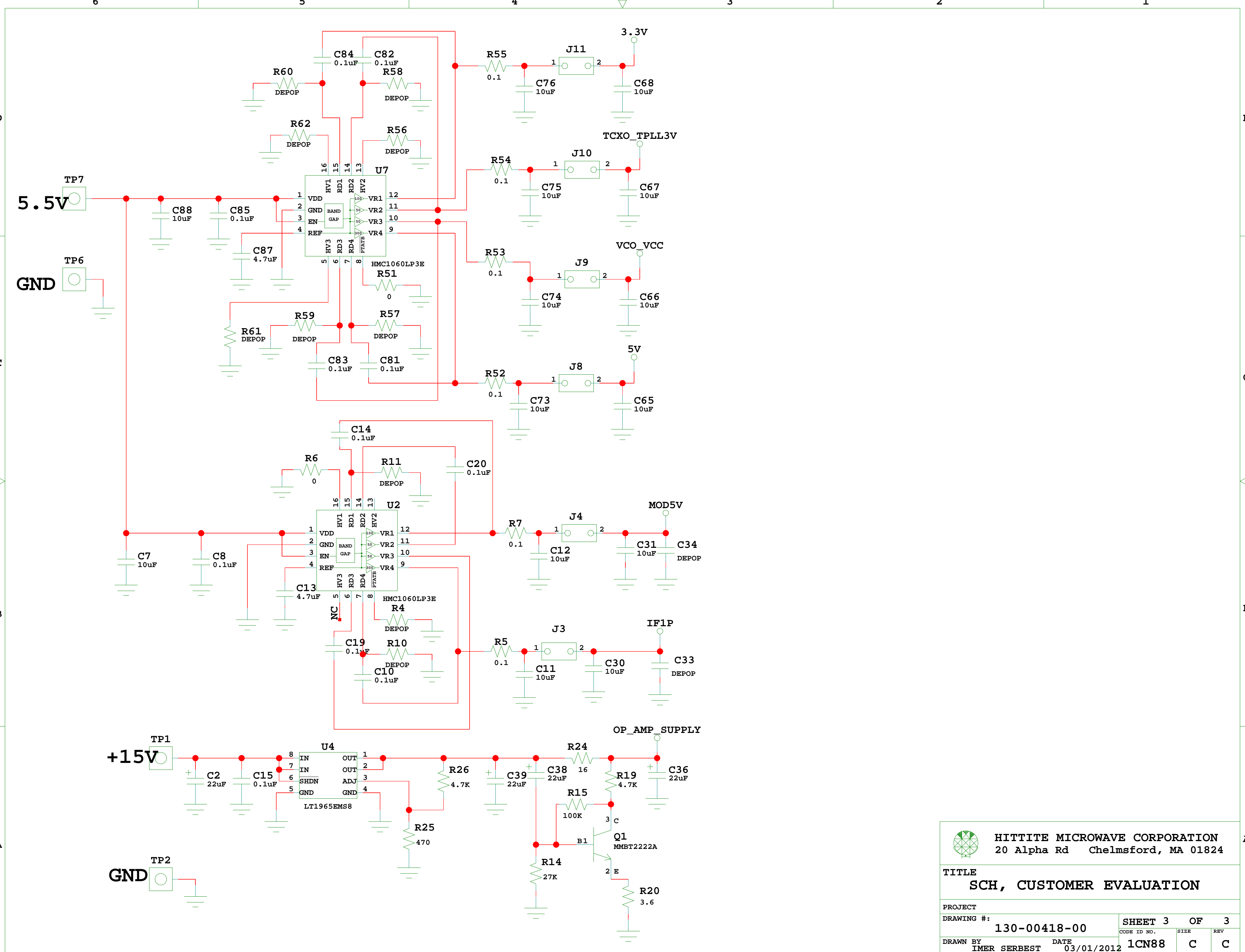
**TITLE**  
 SCH, CUSTOMER EVALUATION


**PROJECT**  
 DRAWING #: 130-00418-00

**SHEET 2 OF 3**

**DRAWN BY** IMER SERBEST **DATE** 03/01/2012 **CODE ID NO.** 1CN88 **SIZE** C **REV** C

24-09-2012\_12:20



 <b>HITTITE MICROWAVE CORPORATION</b> 20 Alpha Rd Chelmsford, MA 01824			
<b>TITLE</b> SCH, CUSTOMER EVALUATION			
PROJECT		SHEET 3 OF 3	
DRAWING #:		CODE ID NO.	
130-00418-00		SIZE	
DRAWN BY		REV	
IMER SERBEST		C C	
DATE		DATE	
03/01/2012		03/01/2012	